

THE **engage** PROGRAM

for Cumberland Presbyterian Congregations

When there is something unhealthy going on in your life, most often, you will stop and assess what is wrong. You will then make the necessary changes to affect a more positive outcome. If you choose not to make the changes, the consequences are most likely negative.

Many, not all, of our churches are unhealthy and it is time to stop and assess what is wrong. This past year, the approach has been to begin a program called C.A.R.E. for our congregations. Although the intent has been well-meaning, the name and what it implies is not. The word "CARE" tends to imply "nursing, coddling and sickness" and other terms that may or may not produce positive images.

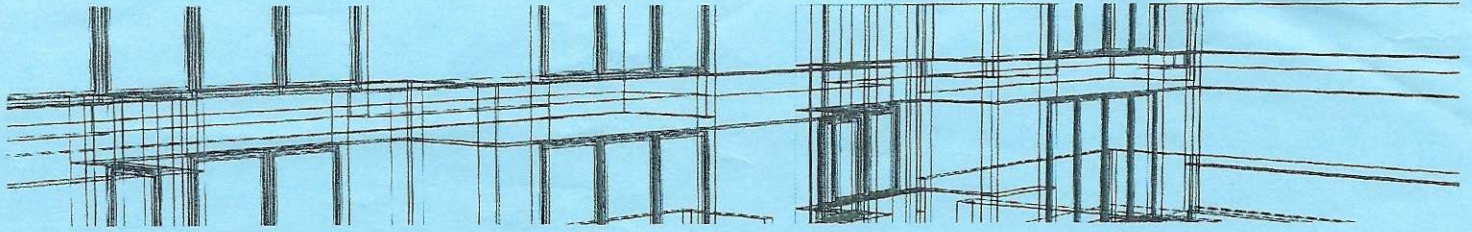
The desire for our congregations to be alive and thriving produce different, more positive images than ones that imply its death bed. If the words, "connect, join, participate, and involve" were used to describe your congregation, how differently do you think? Let us go forth and ENGAGE our congregations.

How do you turn ordinary attendees into passionate champions of the Commission? You ENGAGE them. Healthy, growing churches are engaging new people, as well as, the people that have been steadfast and previously connected with the church. Engaged congregations are made up of enthusiastic people.

An engaged congregation will know what their mission is. This clarification will come about through professional help, a mission statement from the Session and a congregational assessment or other means. This is where we come in. We help lead a congregation to discern so they can ENGAGE.

Once this is determined, the congregation and her participants will serve in it wholeheartedly and live it out daily. They will be passionate enough about it to invite their friends to participate. When one has a purpose, a place to serve, the passion explodes for that individual and they feel a loyalty and a sense belonging within the community. And the church will grow – not because people sat in the pews – but because the congregation has become engaged in the Great Commission to "Go!"

For more information about the emerging ENGAGE program for congregations, please contact Rev. Kristi Lounsbury, Director of Congregational Ministries at klounsbury@cumberland.org or 901-276-4572 ext. 263.



DISCIPLESHIP BLUEPRINTS

Discipleship Blueprints brought to you by The Discipleship Ministry Team

LEADERSHIP TRAINING

- *That comes to you.*
- *That addresses the specific needs of your congregation or presbytery.*
- *On a date that works for you.*

HERE'S HOW IT WORKS:

1. *You select a design.*
2. *You set a date in coordination with DMT that works for your group.*
3. *A DMT trainer will come to you and lead the design that has been customized for your group.*
4. *The host group receives a custom designed event and agrees to pay the travel expense of the DMT trainer.*

For more information or to schedule your event contact:

The Discipleship Ministry Team
 Elinor Brown
 esb@cumberland.org
 901-276-4572 x 205



Ignite your leaders with training and new insight to rejuvenate your ministries.

NEWLY ADDED DESIGNS:

A Beginners Guide to Youth Ministry

This blueprint is for those who are new to youth ministry. We will laugh, cry, and share in the wonder and mystery that is youth ministry. We will explore everything from culture building, office planning, and resource development, to parent engagement and child safety in a light-hearted (sometimes serious), but extremely informative workshop.

Cumberland Presbyterian History

This blueprint can be tailored to the needs and time constraints of the participants. Anything from an overview of the theological/political currents resulting in the Cumberland Presbyterian Denomination to advanced topics in Cumberland Presbyterian studies can be included.

Here's what recent attendees are saying about Discipleship Blueprints:

"I came away with useful information that we plan to implement in the near future"

"I felt that it provided enlightenment and encouragement."